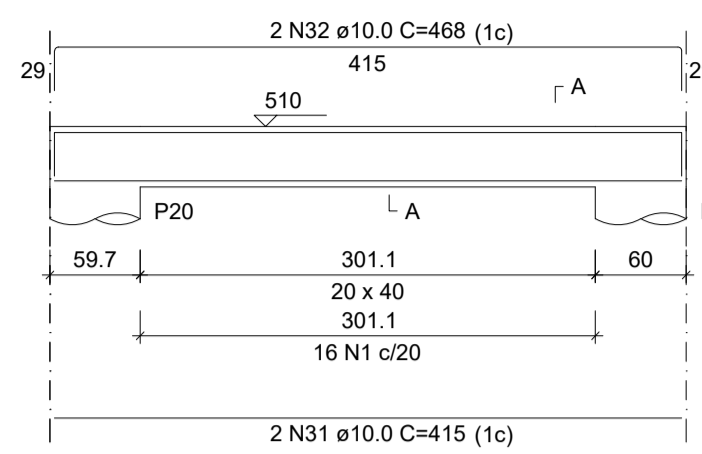


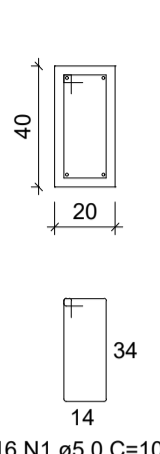
## VT24

ESC 1:50



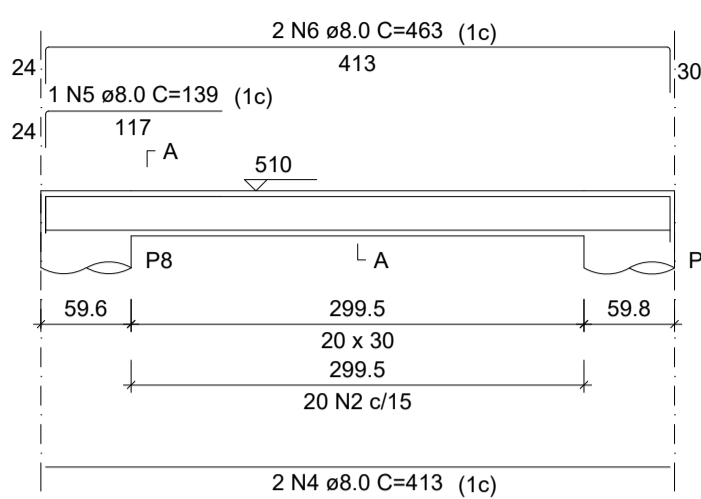
## SEÇÃO A-A

ESC 1:25



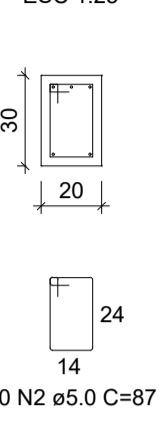
## VT25

ESC 1:50



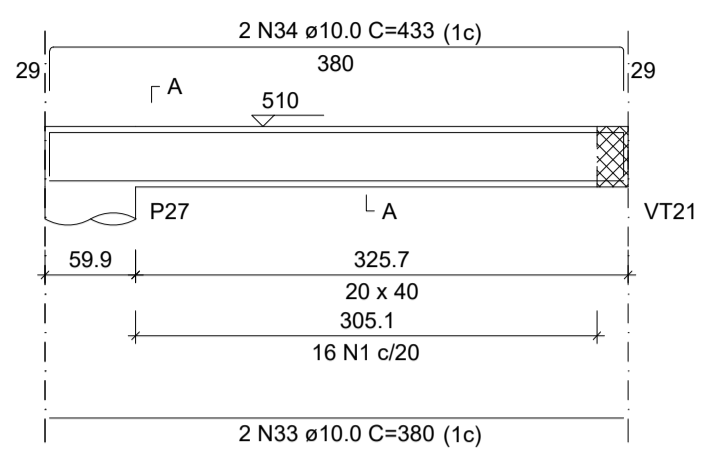
## SEÇÃO A-A

ESC 1:25



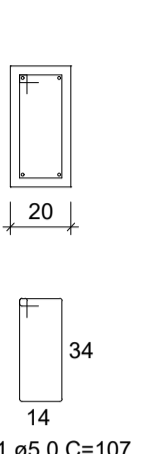
## VT26

ESC 1:50



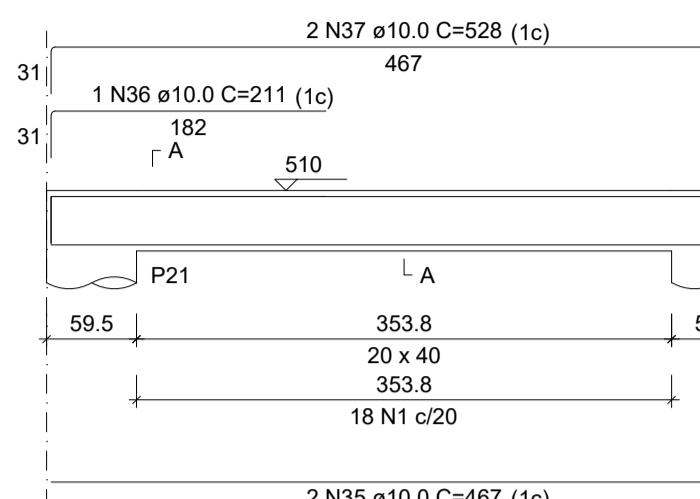
## SEÇÃO A-A

ESC 1:25



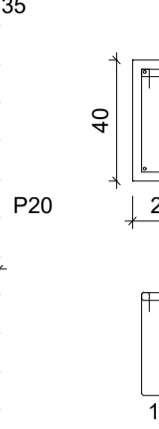
## VT27

ESC 1:50



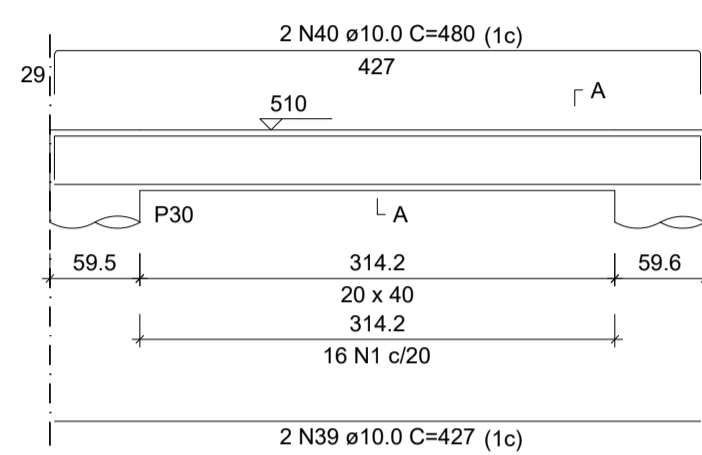
## SEÇÃO A-A

ESC 1:25



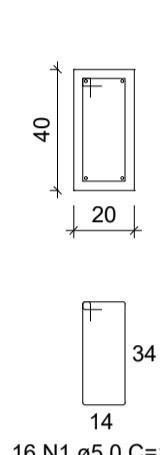
## VT29

ESC 1:50



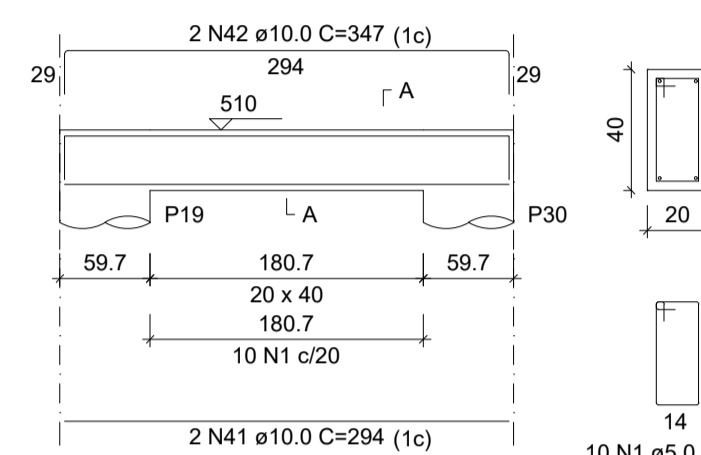
## SEÇÃO A-A

ESC 1:25



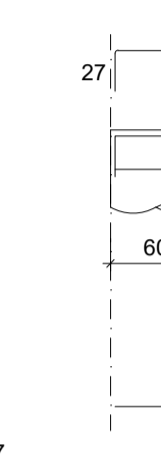
## VT30

ESC 1:50



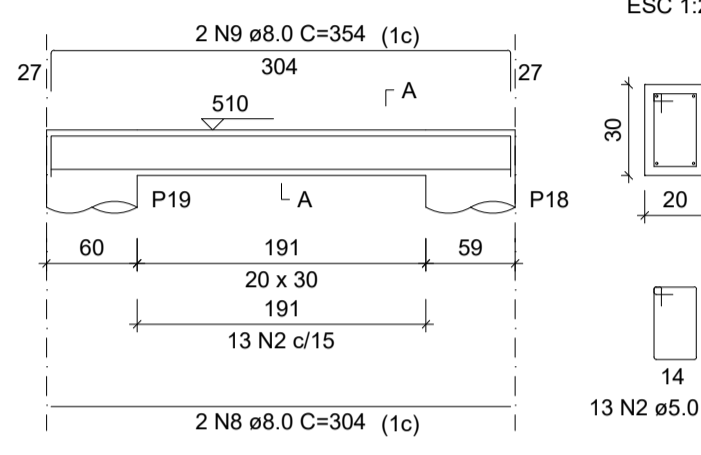
## SEÇÃO A-A

ESC 1:25



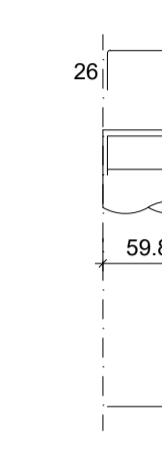
## VT31

ESC 1:50



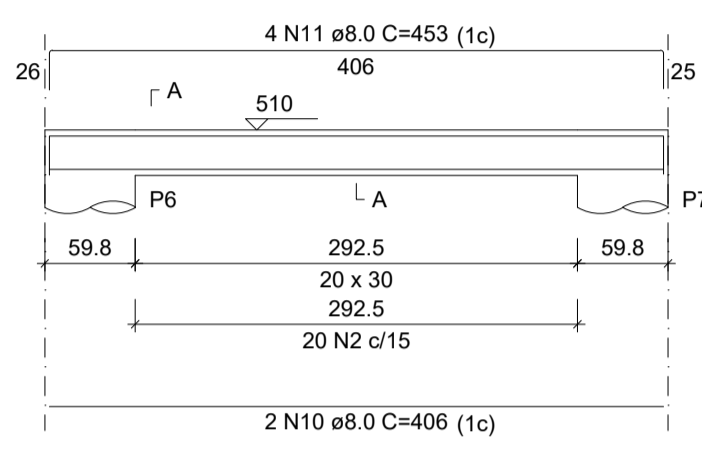
## SEÇÃO A-A

ESC 1:25



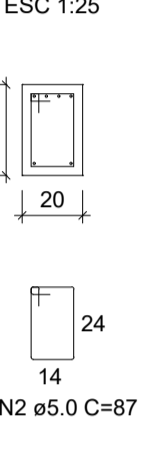
## VT32

ESC 1:50



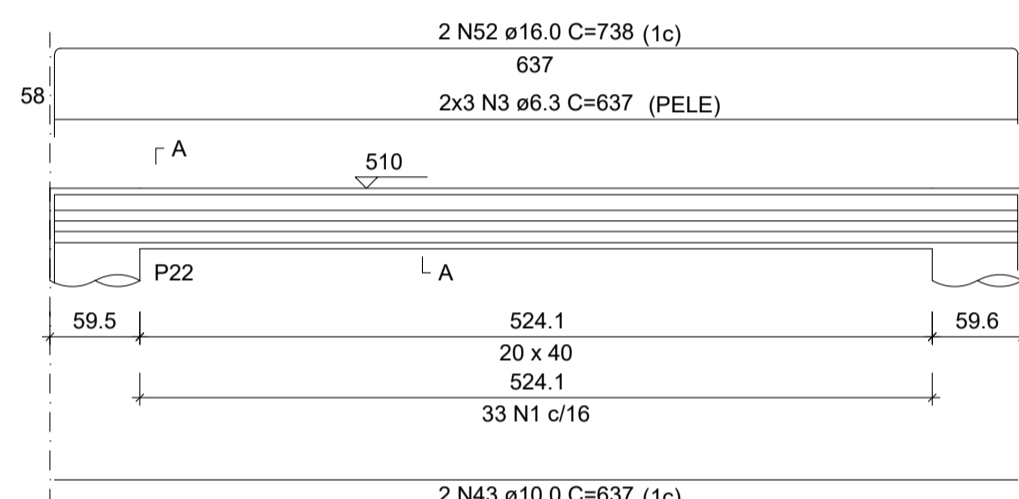
## SEÇÃO A-A

ESC 1:25



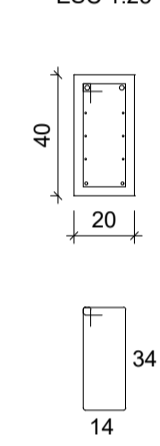
## VT34

ESC 1:50



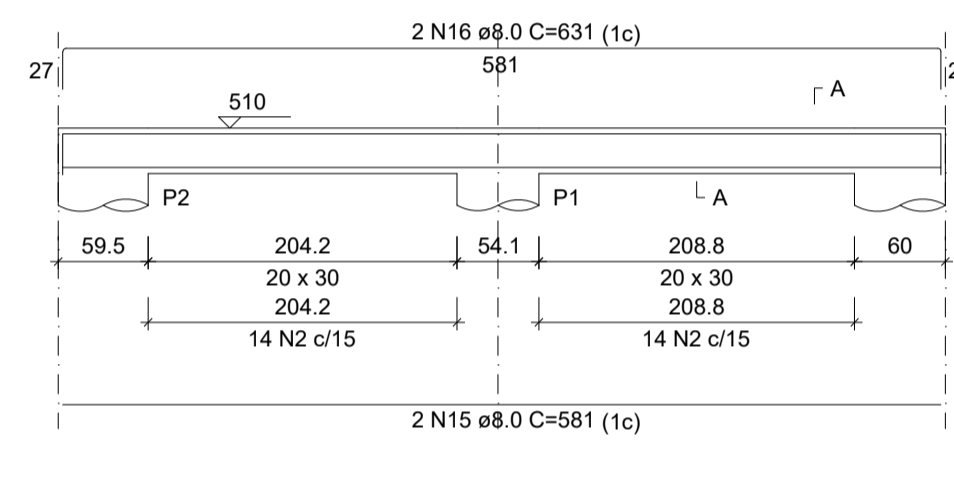
## SEÇÃO A-A

ESC 1:25



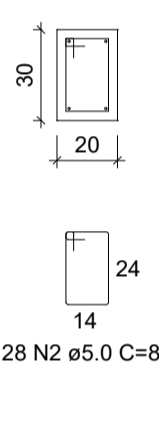
## VT35

ESC 1:50



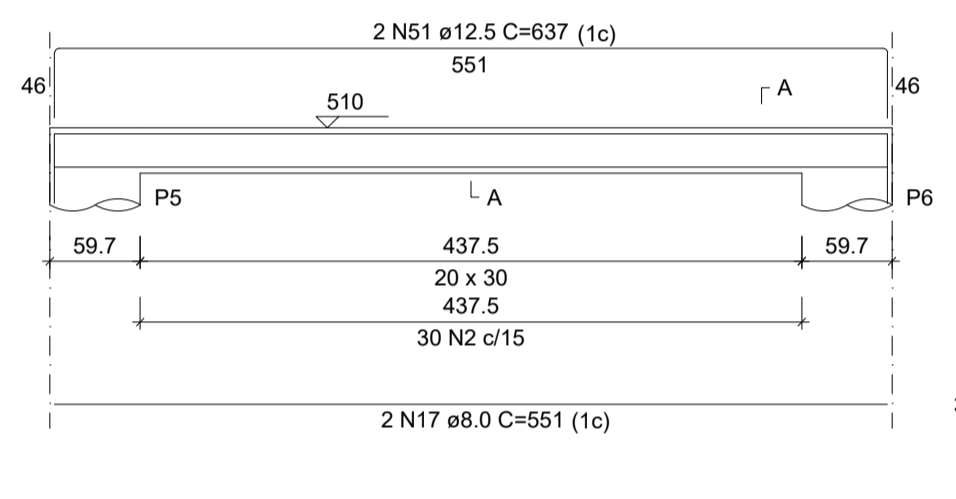
## SEÇÃO A-A

ESC 1:25



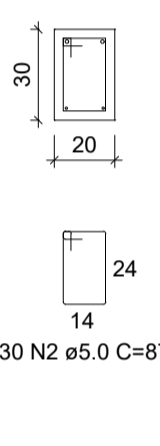
## VT36

ESC 1:50



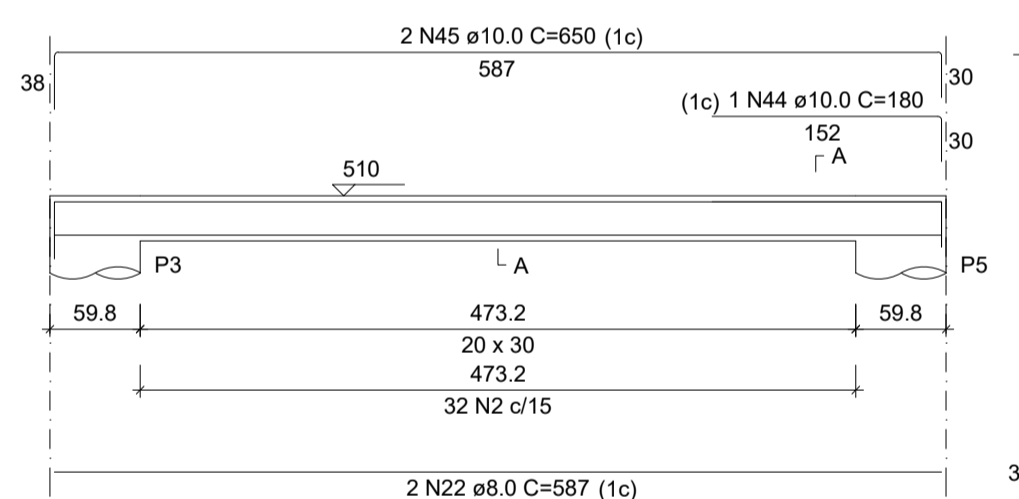
## SEÇÃO A-A

ESC 1:25



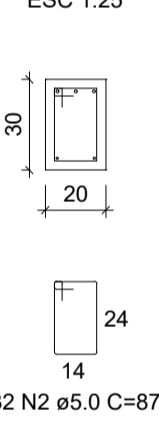
## VT39

ESC 1:50



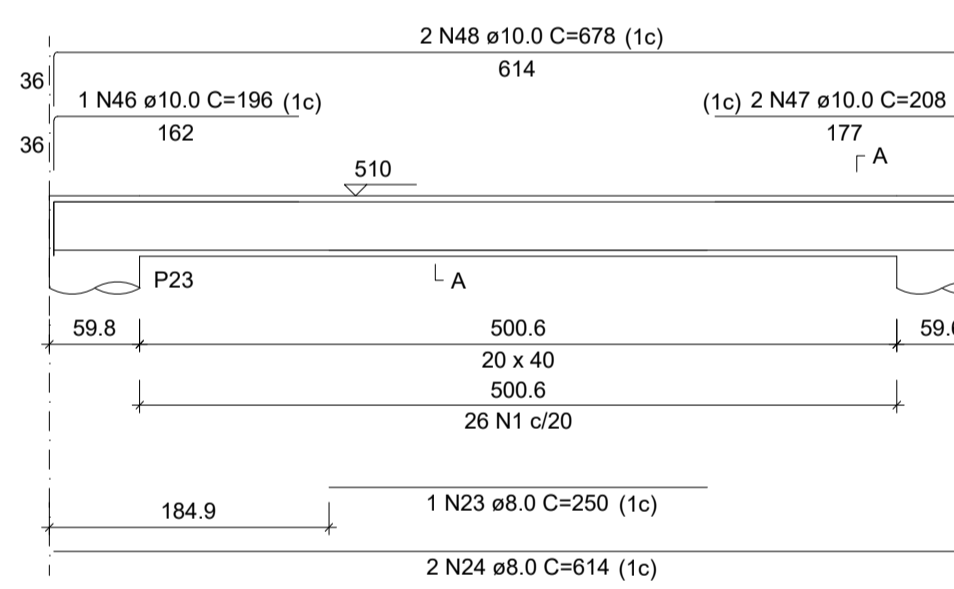
## SEÇÃO A-A

ESC 1:25



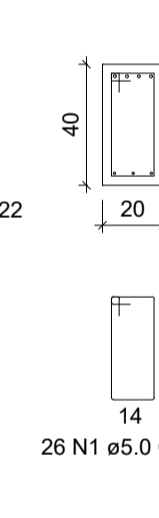
## VT40

ESC 1:50



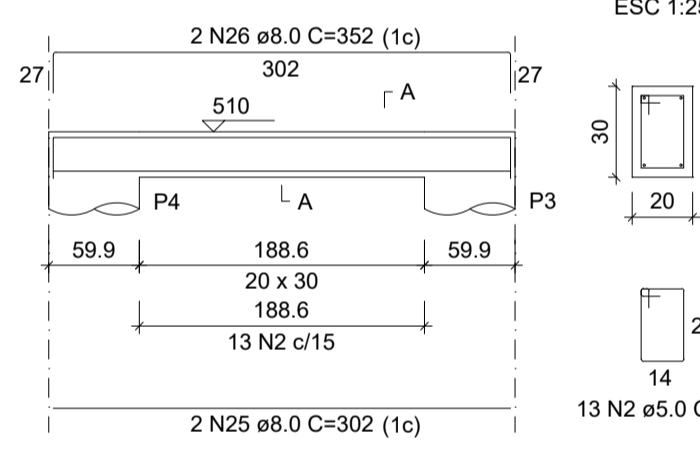
## SEÇÃO A-A

ESC 1:25



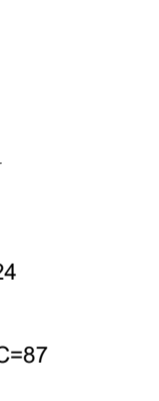
## VT41

ESC 1:50



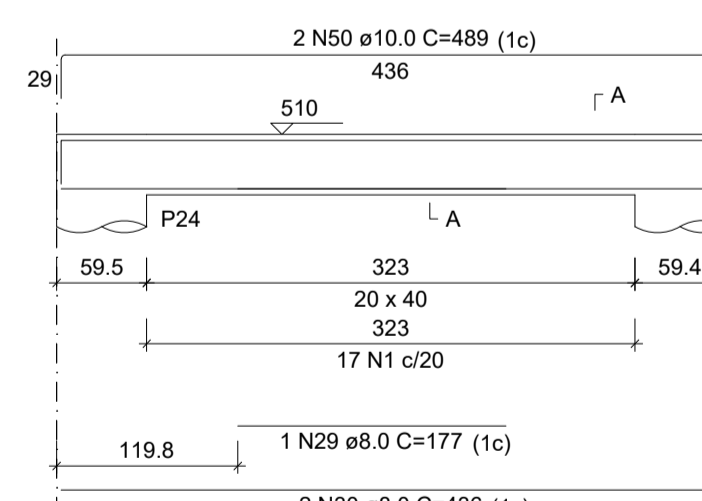
## SEÇÃO A-A

ESC 1:25



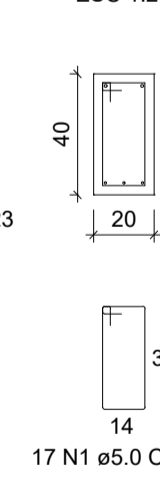
## VT43

ESC 1:50



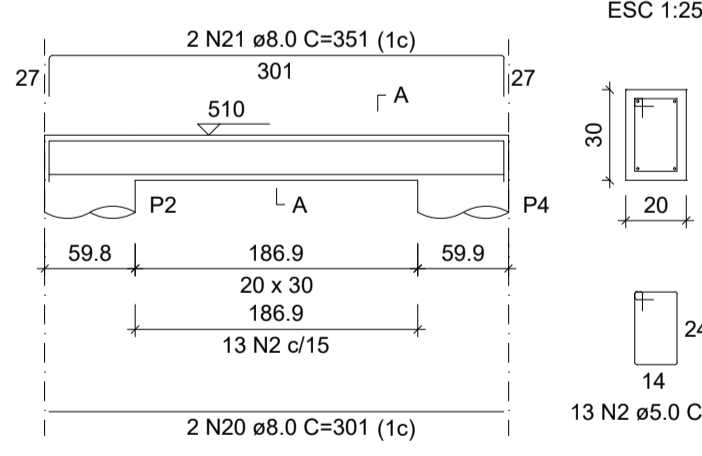
## SEÇÃO A-A

ESC 1:25



## VT38

ESC 1:50



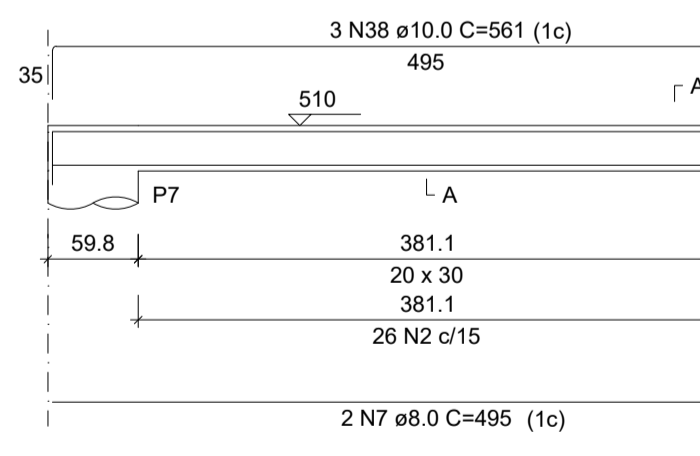
## SEÇÃO A-A

ESC 1:25



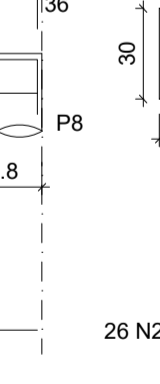
## VT28

ESC 1:50



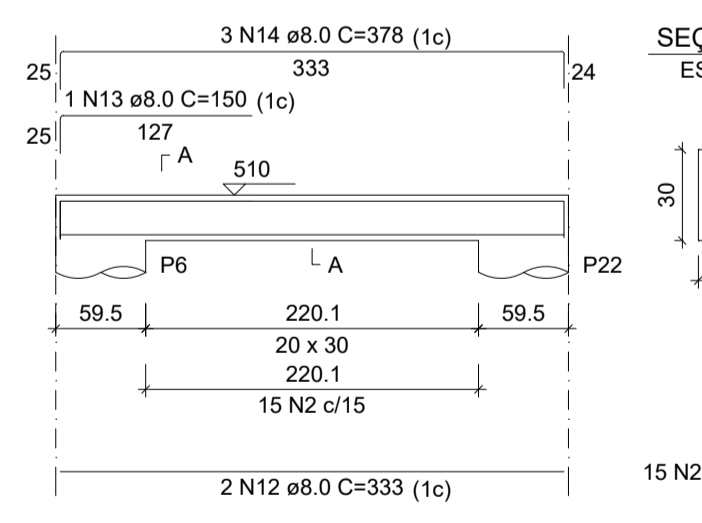
## SEÇÃO A-A

ESC 1:25



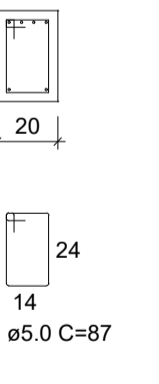
## VT33

ESC 1:50



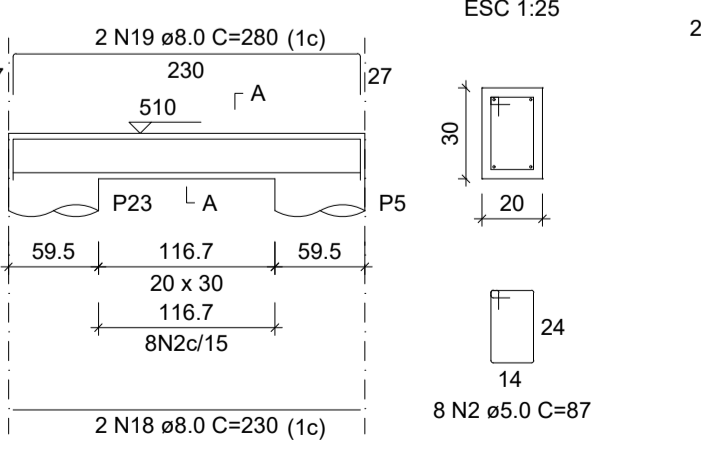
## SEÇÃO A-A

ESC 1:25



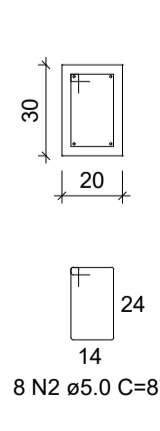
## VT37

ESC 1:50



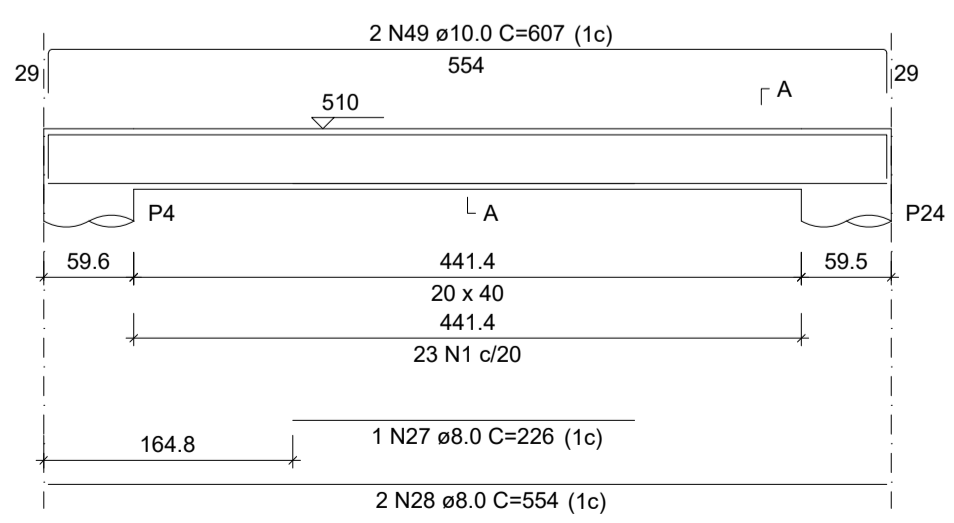
## SEÇÃO A-A

ESC 1:25



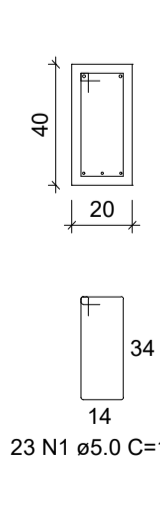
## VT42

ESC 1:50



## SEÇÃO A-A

ESC 1:25



### RELAÇÃO DO AÇO

AÇO	N	DIAM (mm)	QUANT	C.UNIT (cm)	C.TOTAL (cm)
CA60	1	5.0	175	107	18725
CA50	2	5.0	218	87	18966
	3	6.3	6	637	3822
	4	8.0	2	413	826
	5	8.0	1	139	139
	6	8.0	2	463	926
	7	8.0	2	495	990
	8	8.0	2	304	608
	9	8.0	2	354	708
	10	8.0	2	406	812
	11	8.0	4	453	1812
	12	8.0	2	333	666
	13	8.0	1	150	150
	14	8.0	3	378	1134
	15	8.0	2	581	1162
	16	8.0	2	631	1262
	17	8.0	2	551	1102
	18	8.0	2	230	460
	19	8.0	2	280	560
	20	8.0	2	301	602
	21	8.0	2	351	702
	22	8.0	2	587	1174
	23	8.0	1	250	250
	24	8.0	2	614	1228
	25	8.0	2	302	604
	26	8.0	2	352	704
	27	8.0	1	226	226
	28	8.0	2	554	1108
	29	8.0	2	587	1174
	30	8.0	2	436	872
	31	10.0	2	415	830
	32	10.0	2	488	976
	33	10.0	2	380	760
	34	10.0	2	433	866
	35	10.0	2	467	934
	36	10.0	1	211	211
	37	10.0	2	528	1056
	38	10.0	3	561	1683
	39	10.0	2	427	854
	40	10.0	2	480	960
	41	10.0	2	294	588
	42	10.0	2	347	694
	43	10.0	2	637	1274
	44	10.0	1	180	180
	45	10.0	2	650	1300
	46	10.0	1	196	196
	47	10.0	2	208	416
	48	10.0	2	678	1356
	49	10.0	2	607	1214
	50	10.0	2	489	978
	51	12.5	2	637	1274
	52	16.0	2	738	1476

### RESUMO DO AÇO

AÇO	DIAM (mm)	C.TOTAL (m)	PESO + 10% (kg)
CA50	6.3	38.2	10.3
	8.0	209.6	91
	10.0	172.9	117.2
	12.5	12.7	13.5
	16.0	14.8	25.6
CA60	5.0	376.9	63.9
PESO TOTAL (kg)			
CA50		257.6	
CA60		63.9	

Volume de concreto (C-25) = 4.61 m³  
Área de forma = 49.77 m²

### RELAÇÃO DO AÇO

AÇO	N	DIAM (mm)	QUANT	C.UNIT (cm)	C.TOTAL (cm)
CA60	1	5.0	385	87	33495
CA50	2	5.0	161	107	17227
	3	5.0	2	225	450
	4	5.0	32	117	3744
	5	5.0	2	242	484
	6	6.3	2	172	344
	7	6.3	4	170	680
	8	6.3	3	170	510
	9	6.3	6	131	786
	10	8.0	1	260	260
	11	8.0	2	629	1258
	12	8.0	2	374	748
	13	8.0	3	450	1350
	14	8.0	3	524	1572
	15	8.0	1	245	245
	16	8.0	2	724	1448
	17	8.0	2	185	370
	18	8.0	2	300	600
	19	8.0	6	494	2964
	20	8.0	3	547	1641
	21	8.0	2	436	872
	22	8.0	1	495	495
	23	8.0	1	547	547
	24	8.0	1	550	550
	25	8.0	3	697	2091
	26	8.0	3	699	2097
	27	8.0	2	231	462
	28	8.0	2	171	342
	29	8.0	2	280	560
	30	8.0	2	520	1040
	31	8.0	1	529	529
	32	8.0	3	655	1965
	33	8.0	2	210	420
	34	8.0	3	255	765
	35	8.0	2	340	680
	36	8.0	2	399	798